

A Suite for Trumpet & Piano

by Seth Evans

I

1 $\text{♩} = 88$ 11

pp *p*

16 *pp* *p*

21

27 *pp*

34

40 *mp*

45 *p*

52

Trumpet Duet

58

64

mp

f

8

77

p

81

mf

88

1.

95

2.

3

103

110

mp

118

f

Detailed description: This musical score for Trumpet Duet consists of nine staves of music, numbered 58 to 118. The key signature has one flat (B-flat). The notation includes various note values (quarter, eighth, sixteenth, and dotted notes), rests, and dynamic markings. Slurs and ties are used to connect notes across measures. A repeat sign with first and second endings is present between measures 88 and 95. A triplet of eighth notes is marked with a '3' over it in measure 97. The piece concludes with a final measure at measure 118.

Trumpet Duet

II

125 $\bullet = 128$

mp *mp* *p*

132 *p* *p*

139 *p* *p*

145 16 *mp*

167

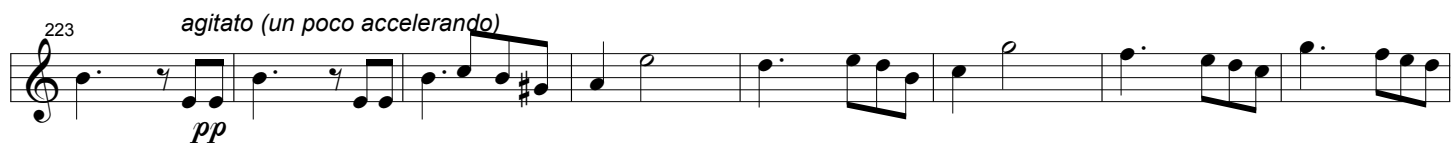
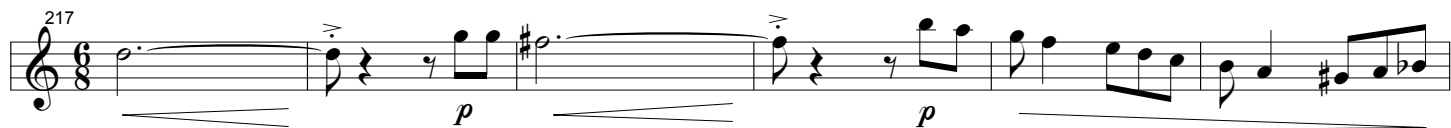
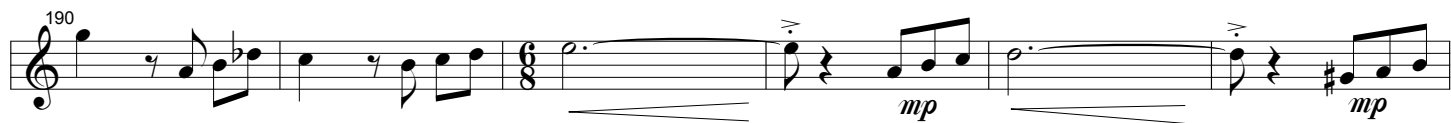
173 *mp*

179 *mp* *mp*

185

Detailed description: This musical score is for a Trumpet Duet, Part II, covering measures 125 to 185. The music is written on a single staff in treble clef. It begins with a tempo marking of 125 and a note value of 128. The key signature has one sharp (F#). The time signature changes from 3/4 to 6/8 and back to 3/4. The score includes various musical notations such as notes, rests, slurs, and dynamic markings (*mp* for mezzo-piano and *p* for piano). There are also crescendo and decrescendo hairpins. A rehearsal mark '16' is placed above a measure. The piece concludes with a final note in measure 185.

Trumpet Duet



Trumpet Duet

III

252 $\bullet = 128$
p

256
mp

259

263
mf

267

271
mp

274

277

Detailed description: This musical score is for a Trumpet Duet, Section III, covering measures 252 to 277. The music is written in a single staff with a treble clef and a key signature of two flats (B-flat and E-flat). The tempo is marked as 128 beats per minute. The score consists of eight lines of music. Measure 252 starts with a 5/4 time signature and a dynamic of *p*. Measure 256 has a dynamic of *mp*. Measure 263 has a dynamic of *mf*. Measure 271 has a dynamic of *mp*. The time signature changes from 5/4 to 3/4 at measure 263 and back to 5/4 at measure 274. The music features various rhythmic patterns, including eighth and sixteenth notes, and rests. There are also some accidentals, such as a sharp on the F line in measure 274.

Trumpet Duet

281

3

p

3¹

288

291

295

pp

299

mp

302

3

305

mf

309

mp

313

3

Trumpet Duet

319 *pp*

322

324 *Lightly*

327 *p*

332 *pp* *mp*

336

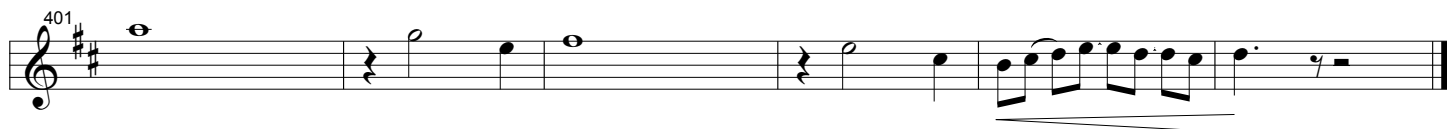
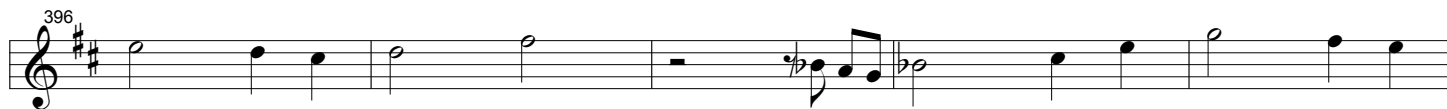
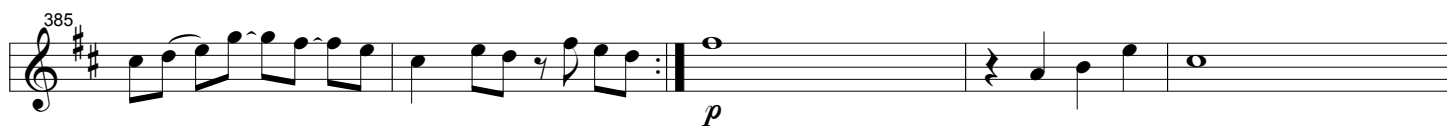
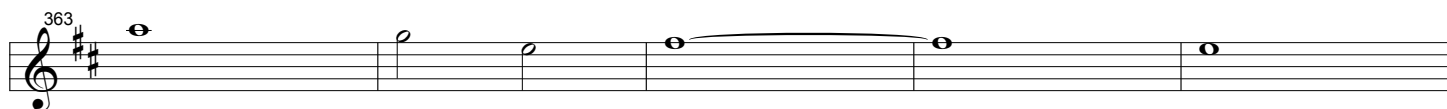
338 *p*

IV

341 *p* = 80

347 2

Trumpet Duet



Trumpet Duet

V

407 $\text{♩} = 88$
p *mp*

420

425

429 *mp*

434

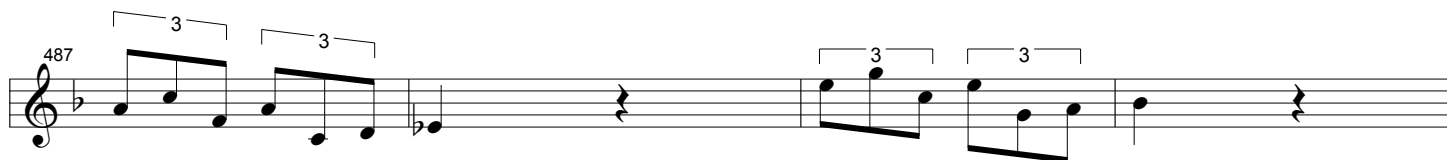
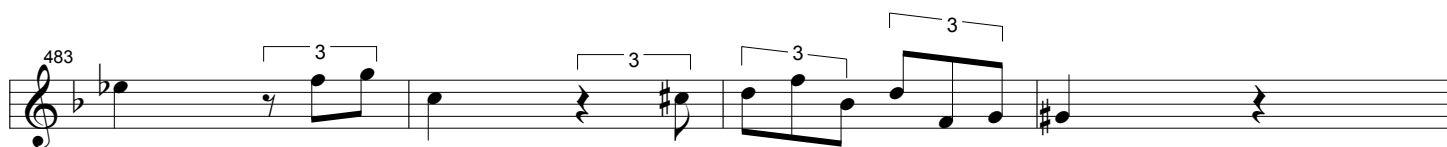
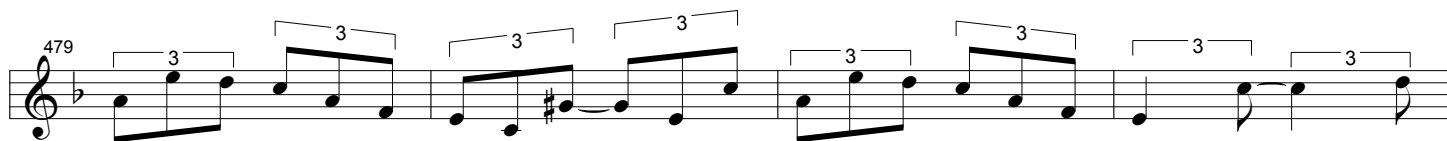
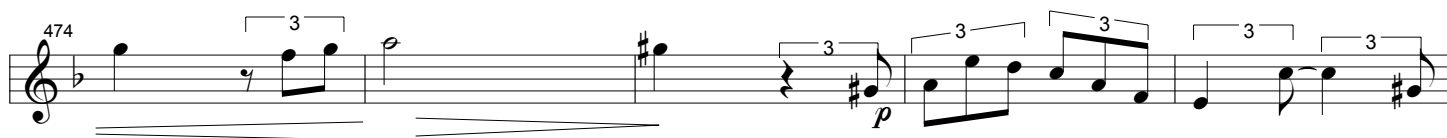
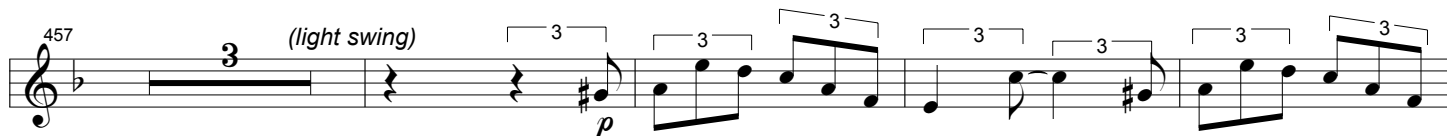
439 *mf* *p*

444 *mf*

448 *p*

Detailed description: This musical score is for a Trumpet Duet, specifically measures 407 through 448. The music is written in 2/4 time with a key signature of one flat (B-flat). The tempo is marked as quarter note = 88. The score consists of eight staves of music. Measure 407 starts with a rest, followed by a half note G4, then a half note F#4. Measure 408 has a half note E4, then a half note D4. Measure 409 has a half note C4, then a half note B3. Measure 410 has a half note A3, then a half note G3. Measure 411 has a half note F#3, then a half note E3. Measure 412 has a half note D3, then a half note C3. Measure 413 has a half note B2, then a half note A2. Measure 414 has a half note G2, then a half note F#2. Measure 415 has a half note E2, then a half note D2. Measure 416 has a half note C2, then a half note B1. Measure 417 has a half note A1, then a half note G1. Measure 418 has a half note F#1, then a half note E1. Measure 419 has a half note D1, then a half note C1. Measure 420 has a half note B1, then a half note A1. Measure 421 has a half note G1, then a half note F#1. Measure 422 has a half note E1, then a half note D1. Measure 423 has a half note C1, then a half note B1. Measure 424 has a half note A1, then a half note G1. Measure 425 has a half note F#1, then a half note E1. Measure 426 has a half note D1, then a half note C1. Measure 427 has a half note B1, then a half note A1. Measure 428 has a half note G1, then a half note F#1. Measure 429 has a half note E1, then a half note D1. Measure 430 has a half note C1, then a half note B1. Measure 431 has a half note A1, then a half note G1. Measure 432 has a half note F#1, then a half note E1. Measure 433 has a half note D1, then a half note C1. Measure 434 has a half note B1, then a half note A1. Measure 435 has a half note G1, then a half note F#1. Measure 436 has a half note E1, then a half note D1. Measure 437 has a half note C1, then a half note B1. Measure 438 has a half note A1, then a half note G1. Measure 439 has a half note F#1, then a half note E1. Measure 440 has a half note D1, then a half note C1. Measure 441 has a half note B1, then a half note A1. Measure 442 has a half note G1, then a half note F#1. Measure 443 has a half note E1, then a half note D1. Measure 444 has a half note C1, then a half note B1. Measure 445 has a half note A1, then a half note G1. Measure 446 has a half note F#1, then a half note E1. Measure 447 has a half note D1, then a half note C1. Measure 448 has a half note B1, then a half note A1.

Trumpet Duet



Trumpet Duet

500 *p*

505

510 *mf*

515

520 *p*

525

529 *f*

533

536

This musical score for Trumpet Duet consists of eight staves of music, numbered 500 through 536. The music is written in a single melodic line on a treble clef staff with a key signature of one flat (B-flat). The notation includes various rhythmic values such as eighth, sixteenth, and thirty-second notes, as well as rests and slurs. Dynamic markings are present: *p* (piano) at measure 500, *mf* (mezzo-forte) at measure 510, *p* (piano) at measure 520, and *f* (forte) at measure 529. The score concludes with a double bar line at measure 536.